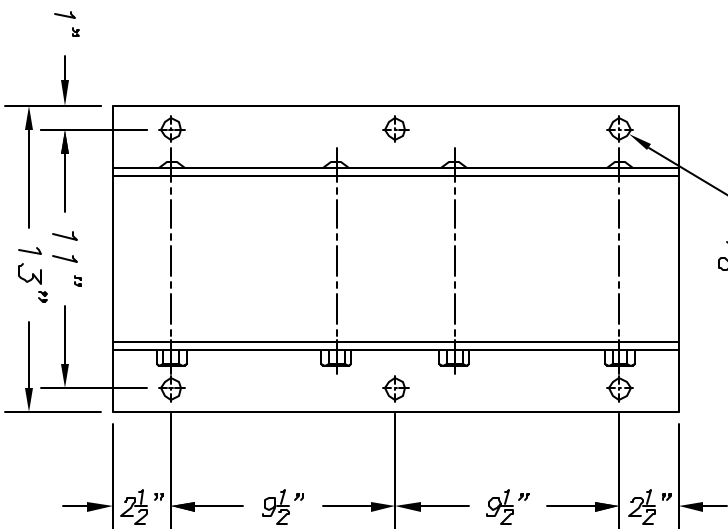
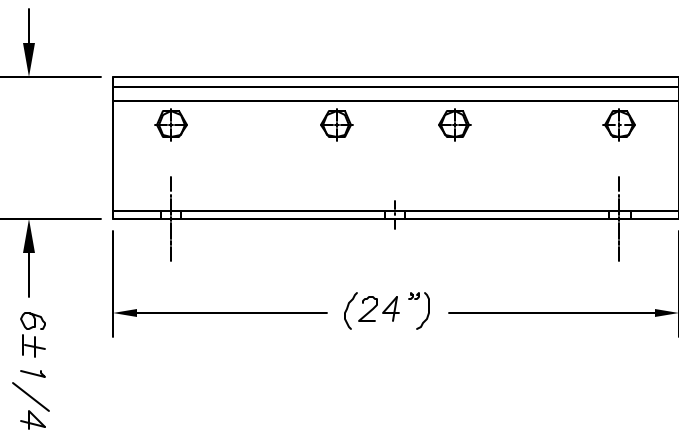


TOP VIEW



FRONT VIEW



RIGHT SIDE VIEW

$\phi 7/8$ " TYP.

THIS DRAWING AND THE DESIGN SHOWN ARE THE PROPERTY OF TMI INCORPORATED. REPRODUCTION OR USE OF THIS DRAWING FOR ANY PURPOSE OTHER THAN THAT SPECIFIED SHALL BE VIEWED AS INFRINGEMENT AND BE SUBJECT TO LEGAL ACTION.

NOTES:  
 UNIT SHOWN IS "ANGLES BOTH SIDES" (VB624-11SF) STANDARD "P1" CONFIGURATION (VB624-11SF/P1) IS ANGLE ONE SIDE, FLAT ON OTHER, FOR WELDING TO DOCK FACE ON ONE SIDE AND ANCHORING TO DOCK FACE ON THE OTHER.  
 "P2" CONFIGURATION (VB624-11SF/P2) IS FLAT BOTH SIDES FOR WELDING TO DOCK FACE ON BOTH SIDES.  
 ALL TOLERANCES ARE  $\pm 1/8$ " UNLESS OTHERWISE NOTED.  
 ESTIMATED GROSS SHIPPING WEIGHT = 100 lbs.

TMI Incorporated  
 5350 Campbells Run Road,  
 Pittsburgh, PA 15205-9738

SCALE: NTS  
 DRAWN BY: A. LAZZO  
 TMI Inc. Appr.:  
 DATE:

TITLE: VB624-11SF  
 DATE: 01.2003  
 PART NO.:

REV.	DESCRIPTION	DATE	BY