
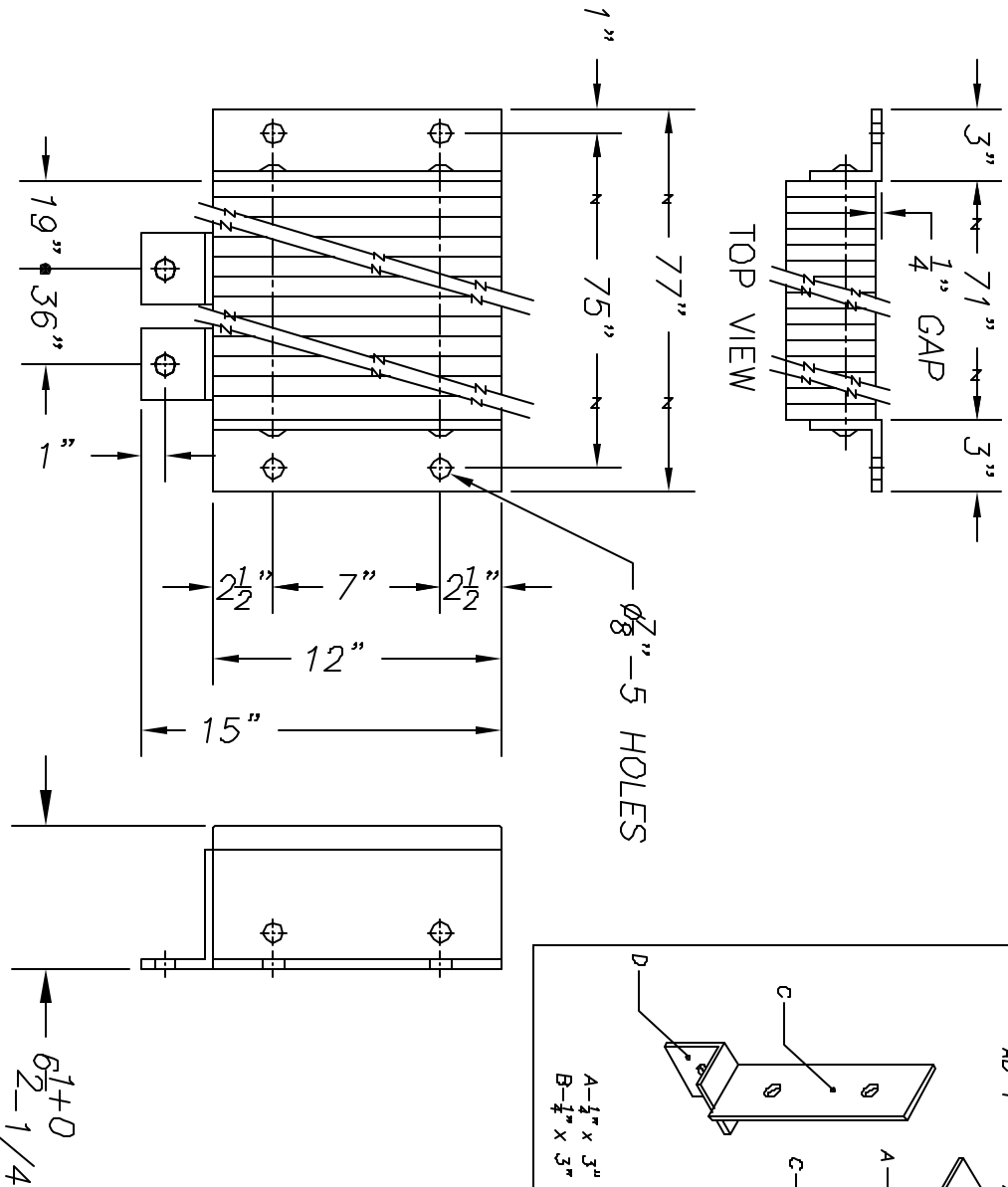


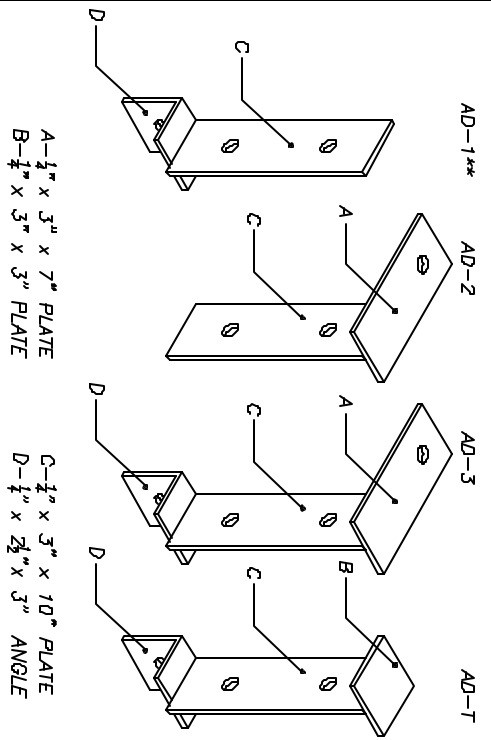
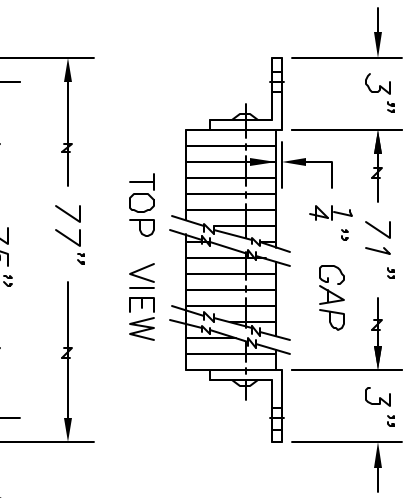
REV.	DESCRIPTION	DATE	BY	THIS DRAWING AND THE DESIGN SHOWN ARE THE PROPERTY OF TMI INCORPORATED. REPRODUCTION OR USE OF THIS DRAWING FOR ANY PURPOSE OTHER THAN THAT SPECIFIED SHALL BE VIEWED AS INFRINGEMENT AND BE SUBJECT TO LEGAL ACTION.
				 <p>TMI Incorporated 5350 Campbelle Run Road, Pittsburgh, PA 15205-9738</p>
				SCALE: 1:96 DRAWN BY: A. LOIZZO TITLE: B612x77-AD* DATE: 01.2003
				TMI Inc. Appr.: DATE:
				TMI Inc. Appr.: DATE:
				PART NO.

FRONT VIEW

RIGHT SIDE VIEW



TOP VIEW



NOTES:
 UNIT SHOWN IS "ANGLES BOTH SIDES" (B612-77)
 STANDARD "P1" CONFIGURATION (B612-77/P1)
 IS ANGLE ONE SIDE, FLAT ON OTHER.
 FOR WELDING TO DOCK FACE ON ONE SIDE
 AND ANCHORING TO DOCK FACE ON THE OTHER.
 "P2" CONFIGURATION (B612-77/P2)
 IS FLAT BOTH SIDES FOR WELDING
 TO DOCK FACE ON BOTH SIDES.
 ALL TOLERANCES ARE $\pm 1/8$ "
 UNLESS OTHERWISE NOTED.
 ESTIMATED GROSS SHIPPING WEIGHT = 223 lbs.
 *NUMBER OF ANCHORAGE DEVICE = 2
 **AD-1 STYLE USED UNLESS OTHERWISE SPECIFIED.