

# NYTREX™

## JUST FLIP IT!

**Prevent Dock Destruction with virtually indestructible Nytrex™ material: the specially formulated nylon based material engineered for maximum loading dock protection!**

### NYTREX™ SLIDER BUMPERS

- Superior durability
- Covered by a 10-year warranty (GT Model) and 6-year warranty (TT Model) (Nytrex™ only)
- Moves up and down with the trailer
- Ideal for Air-ride trailers/yard jockeys
- 4 times (GT Model) and 2 times (TT Model) the life from one bumper...just flip it upside down (GT or TT Models) and back to front (GT Model only). No tools are required.
- Lowest Lifetime Ownership Costs = most cost effective bumper on the market
- Corrosion Resistant Face (non-rust)
- Low noise during operation
- Simple design - no complex mechanisms (wires,wheels, pulleys etc.)

**10**  
**YEAR**

**WARRANTY**

Nytrex™ Only (GT Model)

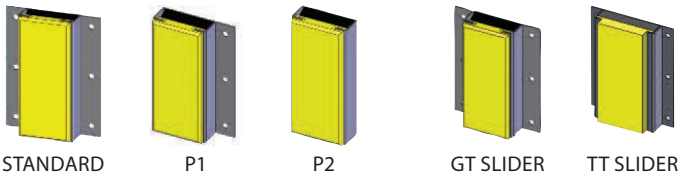
**6**  
**YEAR**

**WARRANTY**

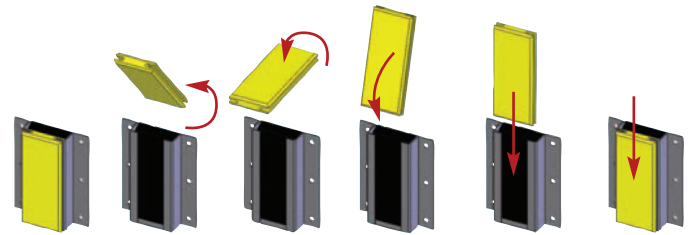
Nytrex™ Only (TT Model)

Moves with the trailer

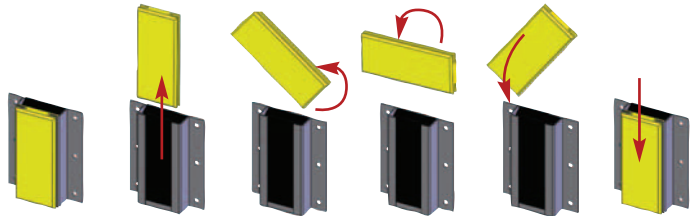
#### INSTALLATION CONFIGURATIONS



**JUST FLIP IT! ... for up to 4 times the life.**



FLIP IT FORWARDS (GT MODEL ONLY)

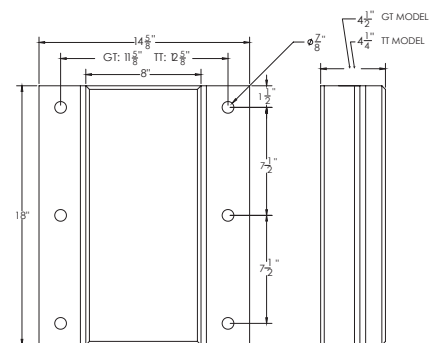


FLIP IT SIDEWAYS (GT AND TT MODEL)

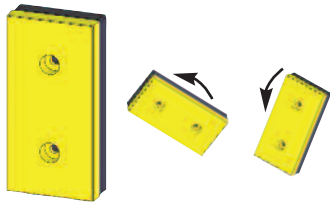
#### SIZES & SPECIFICATIONS:

- Bumper face is 8" wide x 18" high
- GT Model: 4½" Standard Projection with 3½" Nytrex™ and ¾" Rubber backer for added impact absorption
- TT Model: 4¼" Standard Projection with 2" Nytrex™ and 2" Rubber backer
- Larger projections available by adding steel extension brackets
- Customized bracketing available for unique installation options

#### NYTREX™ SLIDER DIMENSIONS:



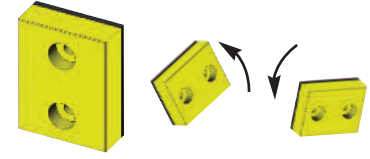
**JUST FLIP IT! ... for 2 times the life.**



MODEL NYTREX™ 18



MODEL NYTREX™ R



MODEL NYTREX™ 13 (DB13)

## NYTREX™ STANDARD BUMPERS

- Replaces laminated or molded bumpers
- Covered by a 5-year warranty (Nytrex™ only)
- Just flip it for 2 times the life from one bumper
- Reduces maintenance/replacement costs
- Safety yellow for high visibility and better trailer placement
- Environmentally friendly (100% recyclable)
- Will fit existing anchor locations when replacing molded bumpers of equivalent size

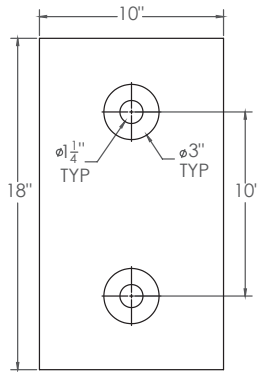
## SIZES & SPECIFICATIONS:

- 4" Standard Projection: 3/4" Nytrex™ and 3/4" Rubber backer for added impact absorption
- Also available as 6" projection assemblies
- Three standard sizes:
  - Model Nytrex™ 18: Face is 10" wide x 18" high
  - Model Nytrex™ R: Face is 12" wide x 13" high
  - Model Nytrex™ 13: Face is 10" x 13" high
- Various projections available by adding steel extension brackets.
- Custom sizes and colors available with minimum quantities. Contact TMI.

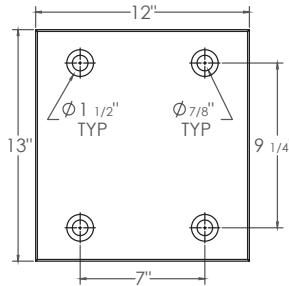


Nytrex™ Only

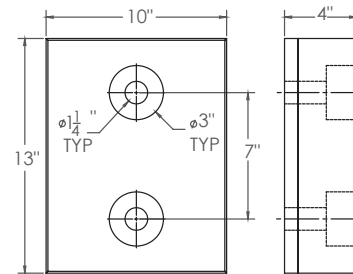
## NYTREX™ STANDARD BUMPERS DIMENSIONS



MODEL NYTREX™ 18



MODEL NYTREX™ R



MODEL NYTREX™ 13

**Prevent Dock Destruction with virtually indestructible Nytrex™ material: the specially formulated nylon based material engineered for maximum loading dock protection!**

TMI, LLC  
[www.tmi-pvc.com](http://www.tmi-pvc.com)

5350 Campbells Run Road  
Pittsburgh, PA 15205

Phone: 1.800.888.9750  
Fax: 412.787.3665  
Email: [info@tmi-pvc.com](mailto:info@tmi-pvc.com)

