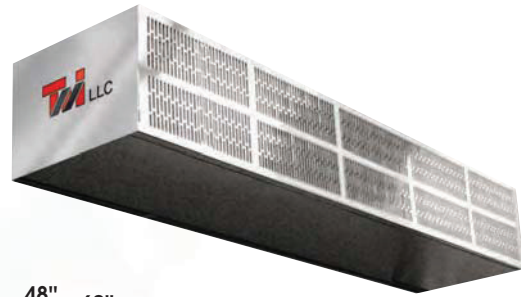


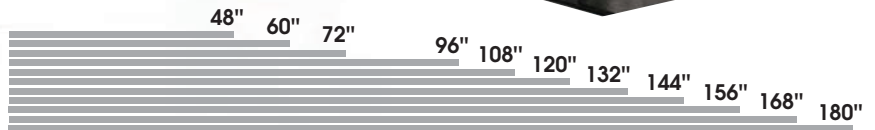
SAVET® HEAVY DUTY INDUSTRIAL SERIES – S-HD



For environmental control up to 18' high and insect control on industrial openings up to 14' high.



SIZES



APPLICATIONS

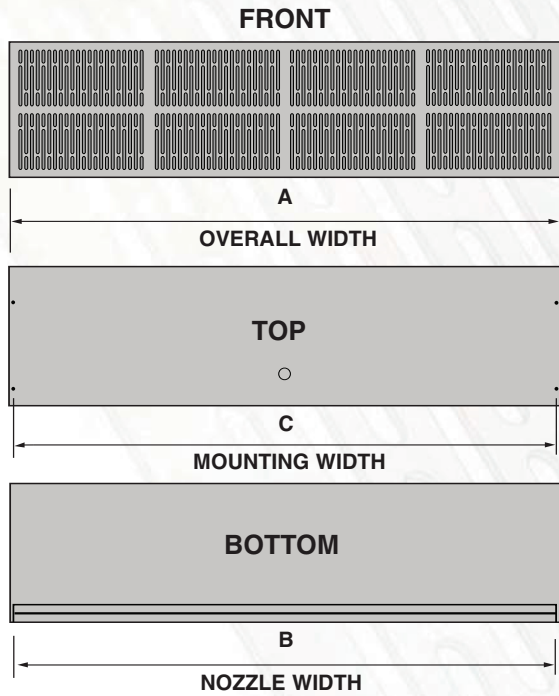
- Loading Docks
- Internal Warehouse Openings
- Shipping and Receiving Doors
- Auto Body and Open Bays
- Paint Booths
- Automotive Openings

FEATURES

- 3 horsepower totally enclosed air over motors
- Stainless steel, one-piece construction
- Exceptionally low noise levels (72 dBA)
- Electric, hot water, steam heat or indirect gas heat optional
- Three-phase power
- Two-year parts warranty for unheated units (18 months for heated units)

HEAVY DUTY INDUSTRIAL SERIES – S-HD

MODEL	S-HD-36-1	S-HD-48-1	S-HD-60-1	S-HD-72-2	S-HD-84-2
Nozzle Width (in.)	36	48	60	72	84
Number of Motors	1	1	1	2	2
Horse Power per Motor	3	3	3	3	3
Power Rating (kW)	2.0	2.0	2.0	4.0	4.0
Max. FPM at Nozzle	5750	5750	5750	5750	5750
Avg. Outlet Velocity FPM	4652	3496	2798	4651	3991
CFM at Nozzle	3198	3205	3206	6396	6402
Outlet Vel. Uniformity (%)	95%	92%	91%	95%	93%
Shipping Wt. Unheated (lbs.)	95	109	122	174	192



S-HD DIMENSIONS CHART					
Model	A	B	C	D	E
36"	37"	36"	36.0625"	15"	15.375"
48"	49"	48"	48.0625"	15"	15.375"
60"	61"	60"	60.0625"	15"	15.375"
72"	73"	72"	72.0625"	15"	15.375"
84"	85"	84"	84.0625"	15"	15.375"
96"	97"	96"	96.0625"	15"	15.375"
108"	109"	108"	108.0625"	15"	15.375"
120"	119"	118"	120.0625"	15"	15.375"
132"	134"	133"	133.0625"	15"	15.375"
144"	146"	145"	145.0625"	15"	15.375"
156"	158"	157"	157.0625"	15"	15.375"
168"	170"	169"	169.0625"	15"	15.375"

Motor Voltages in Amps/Motor							
S-HD	HP	Standard Voltages					
		208	230	460	575	Phase	Hz
	3	7.8	7.4	3.7	3.1	3	60

VELOCITY PROFILE		
Model	Distance from Nozzle	Avg. Core Velocity (fpm)
S-HD	3'	4778
	8'	2926
	12'	2389



BENEFITS

- Immediate energy savings – quick payback period
- Prevents infiltration of cold or warm air, increasing employee and customer comfort
- Blocks outside drafts, flying insects and airborne pollutants
- Increased visibility – no physical barrier in the opening
- Heated units provide supplemental heat, increasing employee comfort

S-HD-96-2	S-HD-108-3	S-HD-120-3	S-HD-132-3	S-HD-144-4	S-HD-156-4	S-HD-168-4
96	108	118	133	145	157	169
2	3	3	3	4	4	4
3	3	3	3	3	3	3
4.0	6.0	6.0	6.0	8.0	8.0	8.0
5750	5750	5750	5750	5750	5750	5750
3496	4651	4259	3838	4651	4321	3991
6410	9594	9598	9602	12792	12798	12804
92%	95%	94%	94%	95%	94%	93%
208	250	279	285	353	366	384