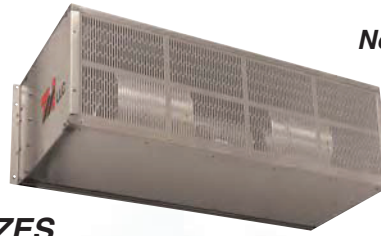


SAVE-T® LIGHT INDUSTRIAL SERIES – S-LI



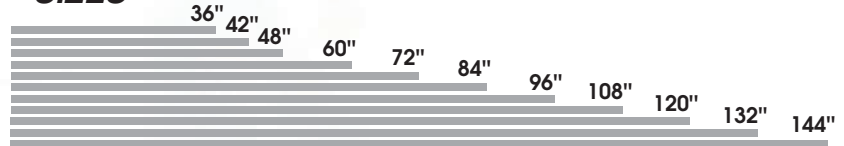
For environmental control up to 12' high and insect control on industrial openings up to 10' high.



Note: One piece units for 14' and 16' wide openings available.

For specifications consult factory.

SIZES

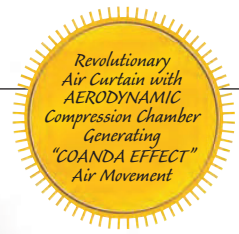


APPLICATIONS

- Loading Docks
- Internal Warehouse Openings
- Shipping and Receiving Doors
- Distribution Centers
- Food Processing
- Meat Processing
- Auto Body and Open Bays
- Paint Booths
- Car Washes
- Walk-In Coolers
- Conveyor Openings

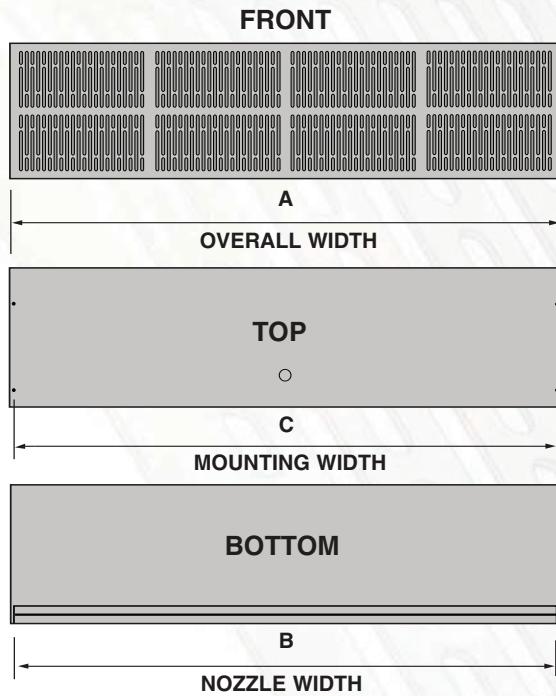
FEATURES

- 3/4 horsepower dual-speed motors
- Stainless steel, one-piece construction
- Optional filters for improved air quality
- Unmatched air flow uniformity
- Exceptionally low noise levels (56 dBA low speed)
- Electric, hot water, steam heat or indirect gas heat optional
- Single-phase or three-phase power
- Two-year parts warranty for unheated units (18 months for heated units)



LIGHT INDUSTRIAL SERIES – S-LI										
MODEL	S-LI-36-1-2S		S-LI-42-1-2S		S-LI-48-1-2S		S-LI-60-1-2S		S-LI-60-2-2S	
Nozzle Width (in.)	36		42		48		60		60	
Number of Motors	1		1		1		1		2	
Horse Power per Motor	3/4		3/4		3/4		3/4		3/4	
Motor Speed(s)	High	Low	High	Low	High	Low	High	Low	High	Low
Max. FPM at Nozzle	4345	2920	4345	2920	4345	2920	4345	2920	4345	2920
Max. CFM at Nozzle	2985	2005	3485	2345	3985	2680	4505	2875	5200	3350
Avg. FPM at Nozzle.	3805	2560	3260	2195	2855	1920	2285	1535	3415	2295
CFM at Nozzle	2620	1760	2605	1745	2635	1770	2603	1755	3925	2640
Outlet Vel. Uniformity (%)	95%		93%		92%		91%		94%	
Shipping Wt. Unheated (lbs.)	95		100		110		120		155	
Heater kW	10		10		10		10		15	
Temp. Rise	13/19		13/19		13/19		13/19		13/19	
Amp Draw 208/1/60	48.1		48.1		48.1		48.1		N/A	
Amp Draw 240/1/60	41.6		41.6		41.6		41.6		N/A	
Amp Draw 208/3/60	27.7		27.7		27.7		27.7		41.6	
Amp Draw 240/3/60	24		24		24		24		36	
Amp Draw 480/3/60	12		12		12		12		18	
Shipping Wt. Heated	100		105		115		125		165	

• Heated units are for interior mounting only



S-LI DIMENSIONS CHART					
Model	A	B	C	D	E
36"	37"	36"	36.0625"	15"	15.375"
42"	43"	42"	42.0625"	15"	15.375"
48"	49"	48"	48.0625"	15"	15.375"
60"	61"	60"	60.0625"	15"	15.375"
72"	73"	72"	72.0625"	15"	15.375"
84"	85"	84"	84.0625"	15"	15.375"
96"	97"	96"	96.0625"	15"	15.375"
108"	109"	108"	108.0625"	15"	15.375"
120"	119"	118"	120.0625"	15"	15.375"
132"	134"	133"	133.0625"	15"	15.375"
144"	146"	145"	145.0625"	15"	15.375"

Motor Voltages in Amps/Motor			
Voltage	Amps/Motor	Phase	Hz
110	8.0	1	60
208/230	3.6		
460	2.0		
575	1.5		

VELOCITY PROFILE		
Model	Distance from Nozzle	Avg. Core Velocity(fpm)
S-LI-96-2-2S	3'	2304
	6'	1679
	10'	1762

BENEFITS

- Immediate energy savings – payback in as little as two years
- Prevents infiltration of cold or warm air, increasing employee and customer comfort
- Blocks outside drafts, flying insects and airborne pollutants
- Increased visibility – no physical barrier in the opening
- Heated units provide supplemental heat, increasing employee comfort



S-LI-72-2-2S		S-LI-84-2-2S		S-LI-96-2-2S		S-LI-108-3-2S		S-LI-120-3-2S		S-LI-132-3-2S		S-LI-144-4-2S	
72		84		96		108		118		133		145	
2		2		2		3		3		3		4	
3/4		3/4		3/4		3/4		3/4		3/4		3/4	
High	Low	High	Low	High	Low	High	Low	High	Low	High	Low	High	Low
4345	2920	4345	2920	4345	2920	4345	2920	4345	2920	4345	2920	4345	2920
5975	4020	6970	4690	7975	5360	8965	6030	9960	6695	11175	7370	11955	8040
3800	2560	3265	2240	2855	1920	3810	2560	3270	2195	2880	1940	3810	2560
5235	3520	5215	3485	5235	3529	7850	5285	7840	5280	7815	5255	10470	7045
95%		93%		92%		95%		94%		94%		95%	
180		195		210		255		290		300		350	
20		20		20		30		30		30		40	
13/19		13/19		13/19		13/19		13/19		13/19		13/19	
N/A		N/A		N/A		N/A		N/A		N/A		N/A	
N/A		N/A		N/A		N/A		N/A		N/A		N/A	
41.6		55.4		55.4		83.1		83.1		83.1		110.80	
48		48		48		72		72		72		96	
24		24		24		36		36		36		48	
190		205		225		270		300		310		370	