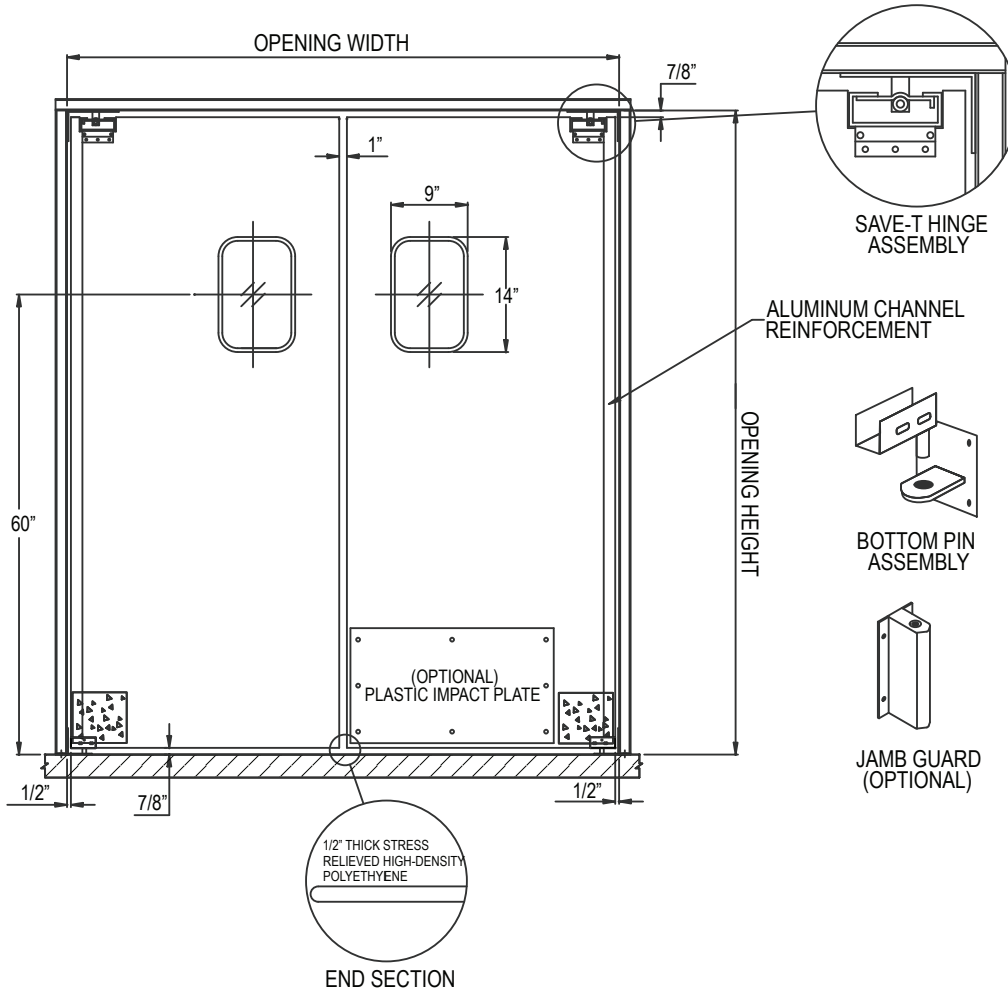
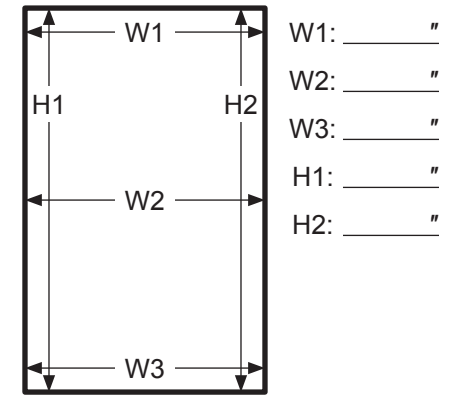


# SERVICE-PRO® SERIES 70 SWINGING DOOR



## DOOR OPENING DIMENSIONS



Please Note: These measurements pertain to the door opening, **NOT** the actual door.

## DOOR SPECIFICATION

- Bi-Parting (Double Panel)  Single Panel  
 Left  Right

## HDPE SHEET COLOR

- White  Beige  
 Black  Gray  
 Red

## WINDOW SIZE

- 6"x12" (Standard)\*  9"x14" (Standard)  
 10"x30"  14"x16"  
 22"x22"  10" Round  
 20" Round

\* Standard on door panels less than 20" wide

## IMPACT PLATES

- 12"  18"  24"  36"  48"  
 Black ABS  
 Stainless Steel  
 Teardrop Bumpers

## HARDWARE

- Bottom Pin (Standard)  
 Stainless Steel Hinge & Bottom Pin  
 Jamb Guard  
 10"  18"  Stainless Steel  
 6"x12" Push Plates  
 Black ABS  Stainless Steel

## CUSTOM SPECIFICATIONS

## STANDARD SERIES 70 FEATURES:

- .500" Polyethylene (HDPE) Construction
- Aluminum U-channel
- Save-T Hinge Assembly
- 9"x14" Acrylic Window
- Bottom Pin

*Pictured: Bi-Parting Door with ABS Plastic Impact Plate*

**SIGNATURE REQUIRED**

JOB NAME/LOCATION \_\_\_\_\_

CUSTOMER/LOCATION \_\_\_\_\_

ORDER # \_\_\_\_\_ CUSTOMER PO # \_\_\_\_\_

Charges will be assumed by buyer for changes or cancellations to work in process. Buyer hereby accepts responsibility for all sizes and dimensions. This order will not be processed until all acknowledgment forms are signed and returned.

**X** \_\_\_\_\_ DATE \_\_\_\_\_