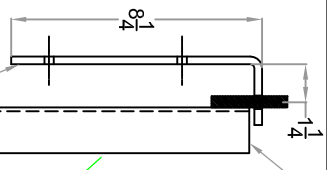


1 1/2" x 1 1/2"
x 1/8" ANGLE



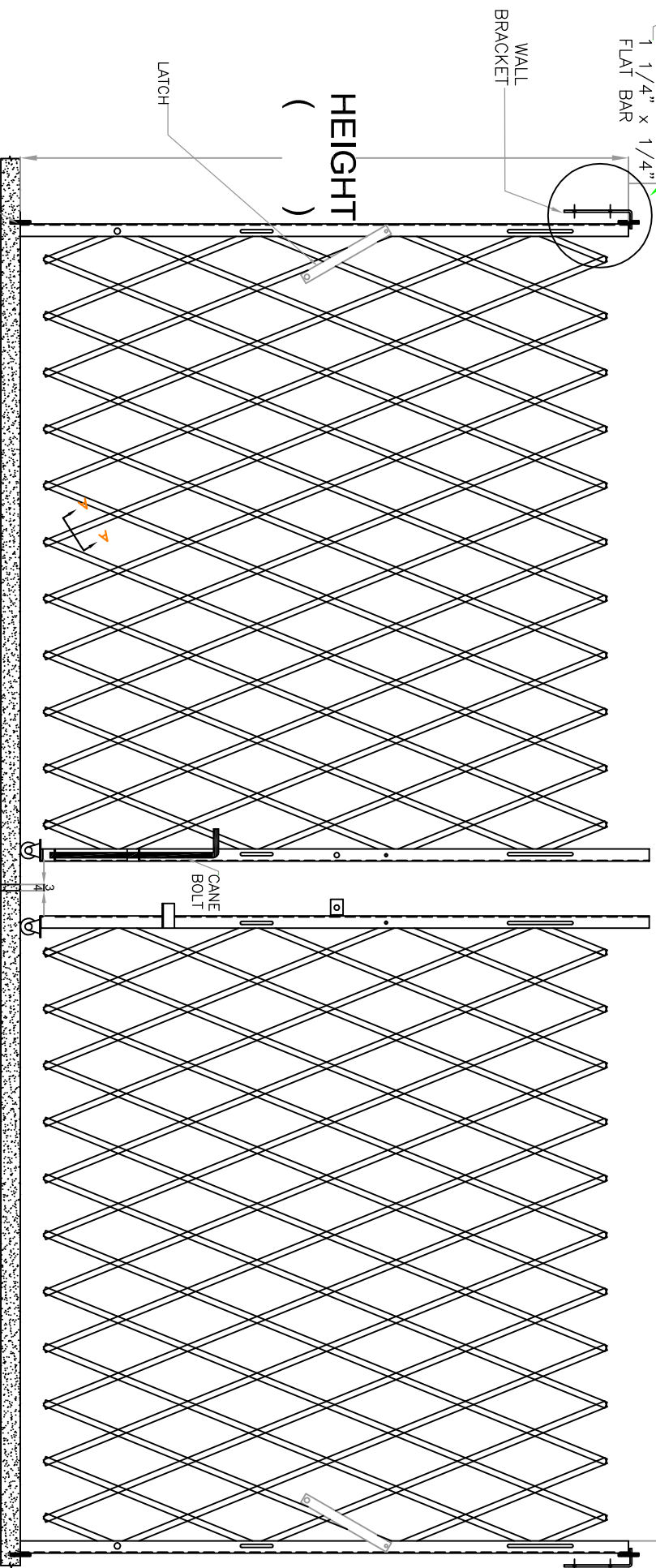
WALL BRACKET OPTION

SELECT (X) FROM BELOW

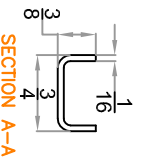
(X)	WALL BRACKET OPTION
	FLUSH (Shown in the drawing)
	6" EXTENDED
	9" EXTENDED
	12" EXTENDED

DOUBLE FOLDING GATE

WIDTH



Ø3/8" PIVOT PIN
WELDED TO THE ANGLE
(DRILL HOLE IN THE
FLOOR)



DRILL 3/4" HOLE IN THE GROUND
FOR THE CANE BOLT

REF.	NOTES	SCALE:	Not to Scale	TITLE	FILE NAME	DWG. NUMBER	REV.
0	REV. "0" ORIGINAL RELEASE - 10/13/09	GAUGE:	see notes	DOUBLE FOLDING GATE	DOUBLE FOLDING GATE	620XXX	0
		MATL.:	see notes				
		DATE:	10/13/09				
		DWN. BY:	JBrooks/K-Patel				
		CKD. BY:					
		REACTIONS:	3 PLACES				
		DESKS:	34"				
		REVISIONS:	34"				

